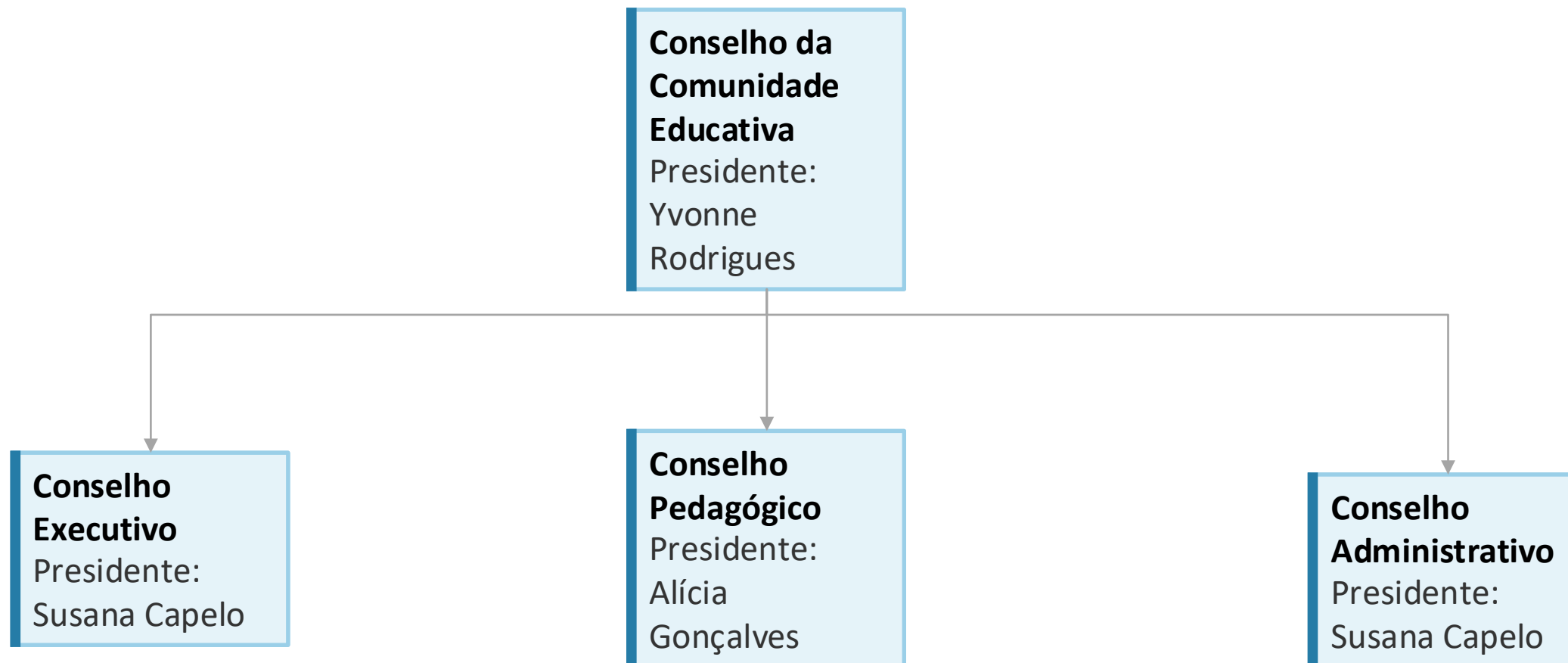
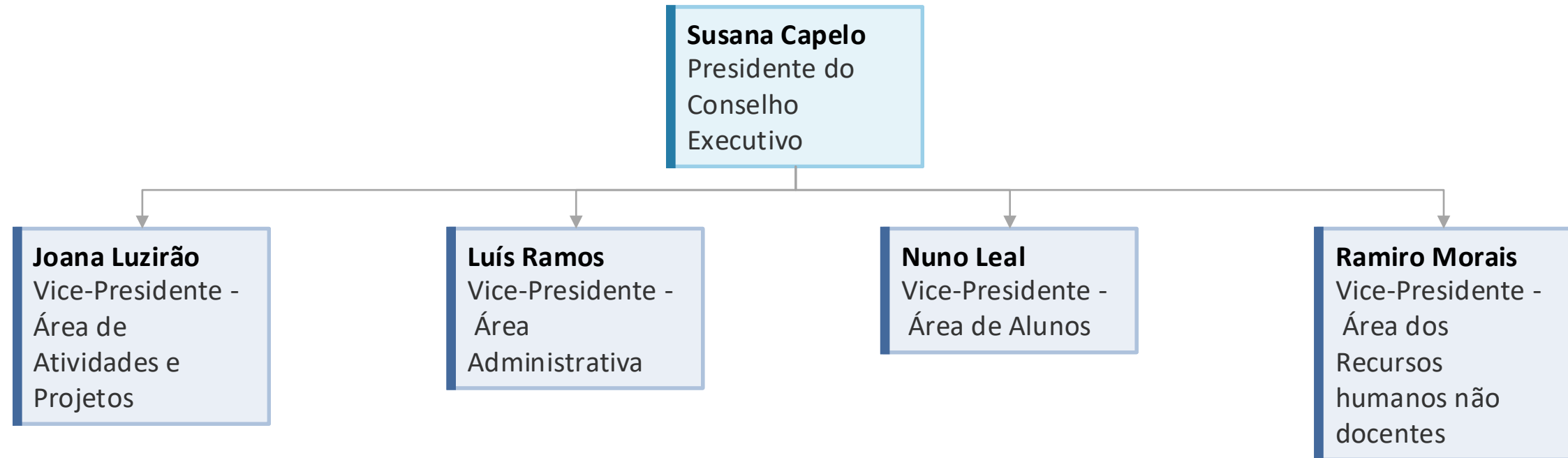


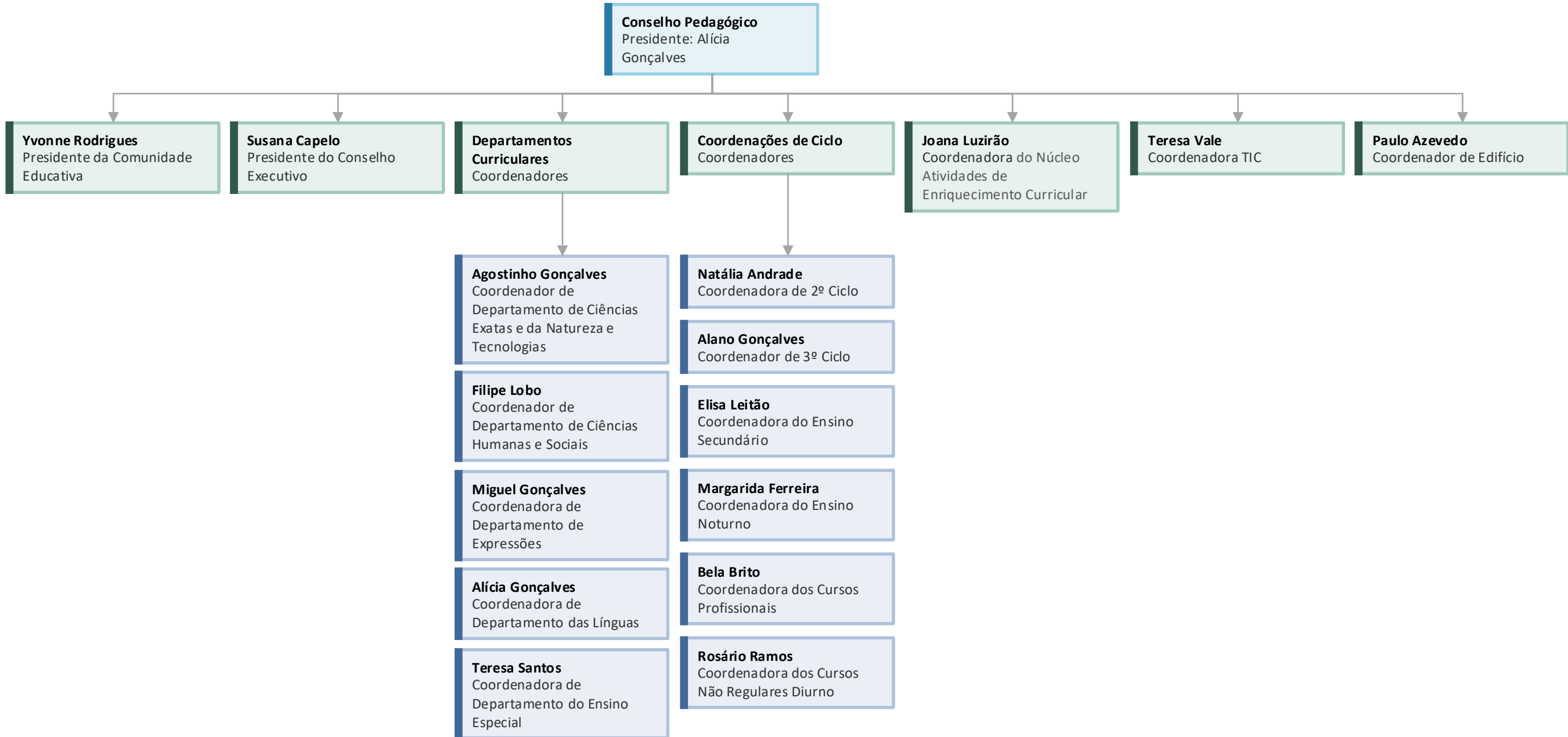
# Organigrama



# *Conselho Executivo*



# Conselho Pedagógico



# *Conselho Administrativo*

**Susana Capelo**  
Presidente do  
Conselho  
Administrativo

**Luís Ramos**  
Vice-Presidente -  
Área  
Administrativa

**Maria da Paz  
Cristóvão**  
Coordenadora  
Técnica

